

EST 1973

Paul Meakin

ESTATE AGENTS

Offers In The Region Of £285,000

Heathfield Vale, South Croydon, CR2 8AJ



Paul Meakin are pleased to present this stunning two bedroom first-floor flat, located in the convenient Heathfield Vale, South Croydon

The flat has been thoughtfully updated, featuring a modern refitted kitchen with ample storage, the bathroom has also been refurbished to a high standard, two spacious double bedrooms, beautiful main living space, providing an area for both relaxing and hosting, well maintained communal areas and on-street parking at the front of the property.

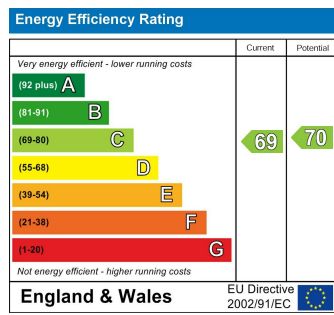
Heathfield Vale is a peaceful neighbourhood, known for its friendly community and convenient access to local shops and amenities, along Selsdon high-street, great local transport links, into Central Croydon and surrounding areas and near-by parks and greenery.



This flat presents a wonderful opportunity for those looking to settle in a desirable location with modern conveniences. Whether you are a first-time buyer, a family looking for a new home or seeking a good opportunity, this flat is sure to impress with its stylish updates and prime location.

Don't miss the chance to make this lovely flat your new home.

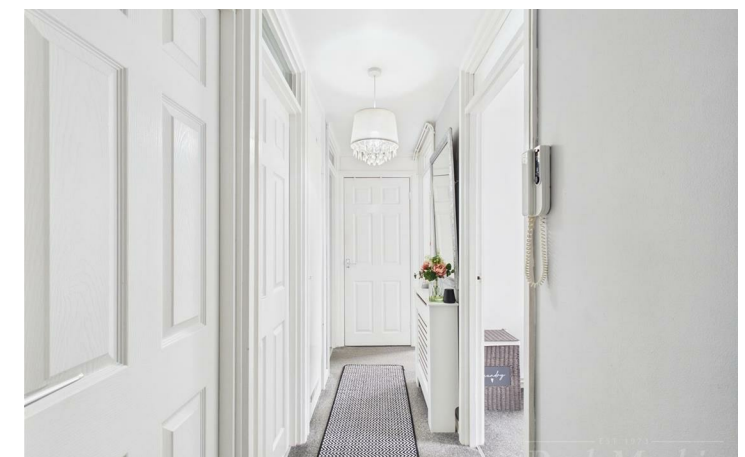
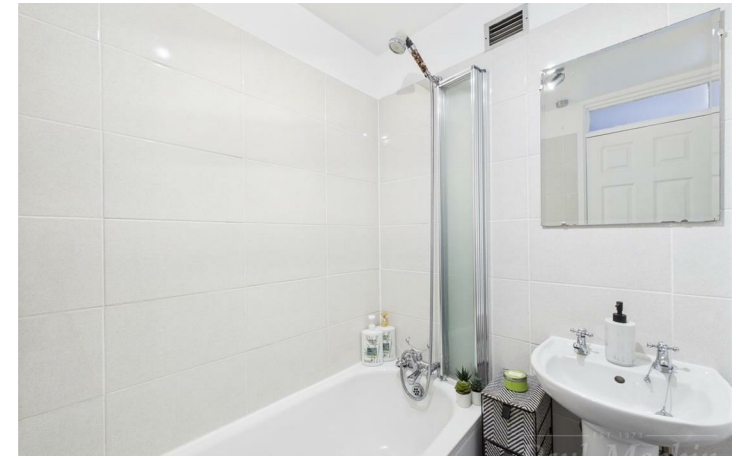
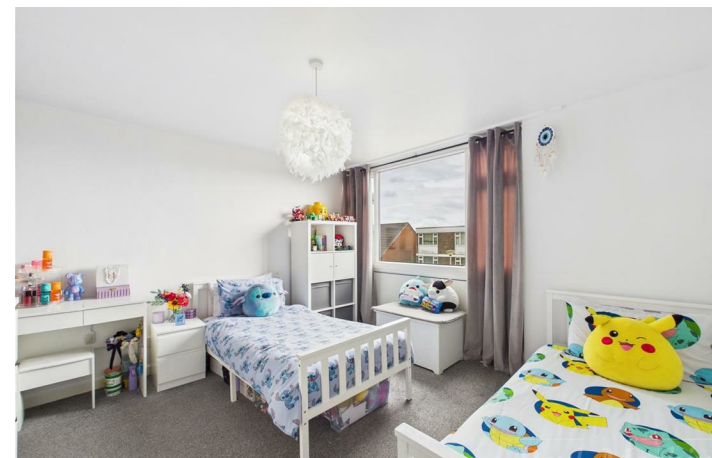
Optional new lease on completion



TAX BAND:

Agents Note: Whilst every care has been taken to prepare these sales particulars, they are for guidance purposes only. All measurements are approximate are for general guidance purposes only and whilst every care has been taken to ensure their accuracy, they should not be relied upon and potential buyers are advised to recheck the measurements

- [illegible]

[illegible]

Bedroom one

12'2" x 11'5" (3.71 x 3.48)

Bedroom two

9'10" x 11'4" (3.01 x 3.46)

Living Room

12'2" x 17'8" (3.73 x 5.41)

Kitchen

10'0" x 10'9" (3.06 x 3.30)

Bathroom

WC

Hallway

Communal Gardens